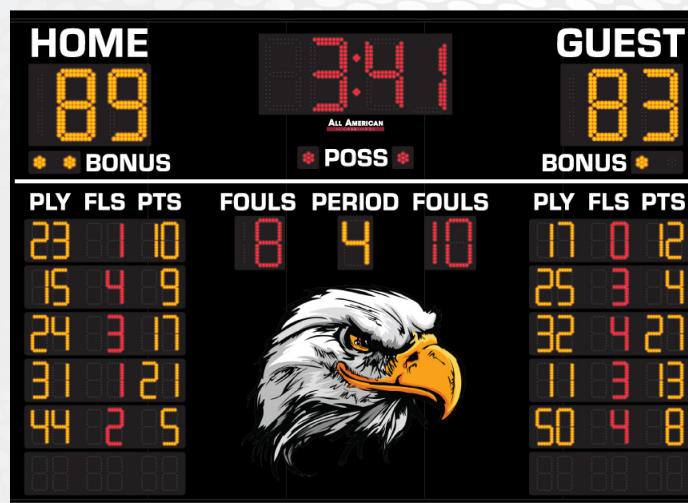


PRODUCT SPECIFICATIONS
BASKETBALL SCOREBOARD

ALL AMERICAN
SCOREBOARDS TM

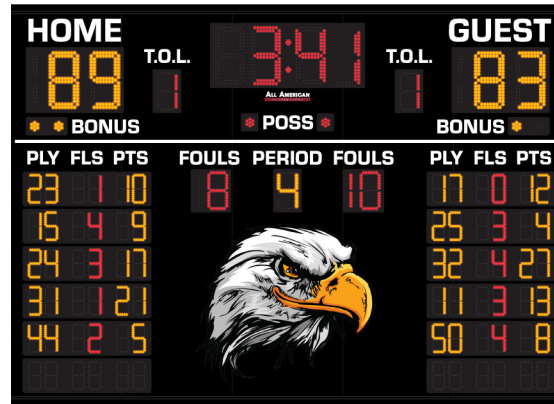


OVERALL DIMENSION	7' High x 10' Wide x 5" Depth. Additional 1.5" mounting flange on top and bottom. Style available in other sizes.
CONSTRUCTION	Fabricated 20 and 22 GA Powder Coated Galvanneal.
INFORMATION	Game Time (12" Red), Home & Guest Scores up to 199 (12" Amber), Period (8" Amber), Possession Indicators (2" Red), Bonus Indicators (2" Amber), Team Fouls (8" Red), Player (6" Amber), Player Fouls (6" Red), Points (6" Amber).
CAPTIONS	Scores (6"), Poss, Bonus, Period, Team Fouls, Player, Player Fouls, Points (3") Changable placard between Volleyball and Basketball. Available graphic area of approx. 38"x55".
HORN	Included 100dB internal horn. 110 dB external trumpet horn available, recommended to be wired at time of manufacture.
ELECTRONICS / DIGITS	100% solid state, microprocessor controlled system with locking connectors. Ultra bright, exposed Red and Amber LED digits.
SERVICING	Sign will be serviceable by removing the home score digit pan to access components.
COMMUNICATION	Radio communication is standard using a 2.4 GHz Frequency hopping spread spectrum transceiver. Hardwire optional on scoreboard, recommended to be installed at time of manufacture.
POWER REQUIREMENTS	120VAC, 3.9 Amp. Includes 6' power cable exiting the top left of the cabinet with standard grounded 3 prong connector. 20 Amp circuit recommended.
INSTALLATION	May be mounted to nearly any wall surface, no hardware supplied. Intended for dry locations.
ESTIMATED WEIGHT	250 lbs.
WARRANTY	Five year guarantee against defects in materials and workmanship. Factory repair service for parts in warranty. Union label. UL Certified.
ADDITIONAL OPTIONS MODEL NUMBER + ()	Time Outs Left (TOL), Protective Lens Kit (PLK + Model Number). White, Green, Amber digits available (Red and Amber as shown is standard).
AVAILABLE CONTROL CONSOLE (SOLD SEPARATELY)	MSC9000 (Multi-sport Desktop Console) Extruded Aluminum, high impact low profile microprocessor control console. 5" high x 10.25" wide x 9" deep. Weight: 4.3 lbs. Radio (1600 ft) is standard, simultaneous hardwire option included. Internal rechargeable battery. Switch between multiple sports by removing and replacing the slip sheet. Although possible to control with a single console, 2 consoles are recommended for Stats and Scoring.

PRODUCT SPECIFICATIONS
BK9107 OPTIONS

BK9107TOL

8" Time Outs Left (TOL) red digits added.



PLK + MODEL NUMBER

Protective Lenses Installed in front of each digit assembly.

